



Baltimore Clayworks

Request for Qualifications Attention Mosaic Artists

Date of Issue: October 1, 2024

Application Deadline: November 1, 2024

Baltimore Clayworks (“BCW” or “Clayworks”) is accepting Requests for Qualifications (RFQ) from Maryland mosaic artists to design, create, and oversee the installation of an accessible outdoor mosaic seating area on Clayworks’ campus.

Project Overview

The mosaic seating will be inspired by natural elements and protection of our local watershed as a reflection of community input and Clayworks’ core values of artist-centeredness, excellence, inclusivity, integrity, and joy. The installation will be a distinct feature of the “Sacred Place” that BCW is currently developing in partnership with Nature Sacred. A “Sacred Place” is an outdoor space that is created to reduce stress, improve health, and strengthen the communities in which they are established. We will also use this space as an opportunity to recognize the indigenous people of this area.

Project Visioning Statement

We imagine a space that ignites curiosity, sparks conversation, and joins people, nature, and clay, from their ancestral roots to their hopeful future. It will be a place for grounding and reflection, an accessible and joyful garden in which all people in our community can feel they belong.

Applications Requirements

To be eligible for consideration, please submit the following:

- Cover sheet with name, address, phone, email, website, and the names and contacts for three professional references
- An artist statement or letter of interest
- CV reflecting qualifications and applicable experience
- 10 relevant work samples (JPEG)
- Image List that includes file name, title, date, dimensions, location (if applicable) and medium

Please label each file with your last name and item (i.e. SmithCoverSheet) and email materials with the Subject Line “Mosaic Artist Application” to: holly.jackson@baltimoreclayworks.org

Questions: holly.jackson@baltimoreclayworks.org; 410-578-1919, ext 218

Application Review

Up to three semi-finalist artists will be selected for consideration.

Artist Applications will be reviewed by the Sacred Place Art Committee that is composed of BCW's community, artists, staff, board members, and landscape experts. The committee will use a rubric to assess applicant's artistic background, work samples, and previous experience.

Applications must demonstrate:

- Experience creating and overseeing the installation of a permanent public art installation
- Technical skill and knowledge of fabrication methods
- Willingness to incorporate community/organization design input

Project Timeline

November 1, 2024

- Applications due

Winter/Spring, 2024-2025

- Art Committee Meets to review Applications
- Semi-Finalists meet with staff and committee members

Spring 2025

- Landscape revitalization and site preparation

Spring 2025- Fall 2025

- Artist contracted
- Artist meets with BCW's steering committee to understand goals and project visioning statement

Fall 2025

- Artist has created design concept and budget

Fall 2025- early 2026

- Open General BCW community and up to 4 partner engagement sessions in collaboration with BCW teaching artists and staff
- Developing work will be documented on our website, through social media and in our newsletters and gallery.
- Artist presents final design and maquette of project

January- March 2026

- Artist creates work

March 2026

- Installation complete and site is open to the public
- Dedication and Acknowledgement Ceremony

Design Considerations for Selected Artist

- The artist must take precautions to ensure the artwork is safe for use and access in a public environment.
- The artist should take into account the landscape design plan and designated site placement.
- The installation should be durable and built with the understanding that it will be touched and climbed on frequently.
- The artist must consider the design principles of accessibility
- The installation must be low maintenance, theft-resistant, and made with permanent and durable materials.
- The artist will be responsible for submitting an artwork maintenance manual upon completion.

Contracting

- The contracted artist will visit Baltimore Clayworks or Baltimore community site a minimum of eight times for the following:
- Concept design kick-off
- Open community engagement session; up to 4 Community outreach engagement sessions/presentations during implementation (in collaboration with BCW staff and Sacred Place Art Committee)
- Pre-construction site visit
- Artwork installation
- Artwork dedication at a date to be determined

Additional visits may be necessary depending on the specific needs of the project.

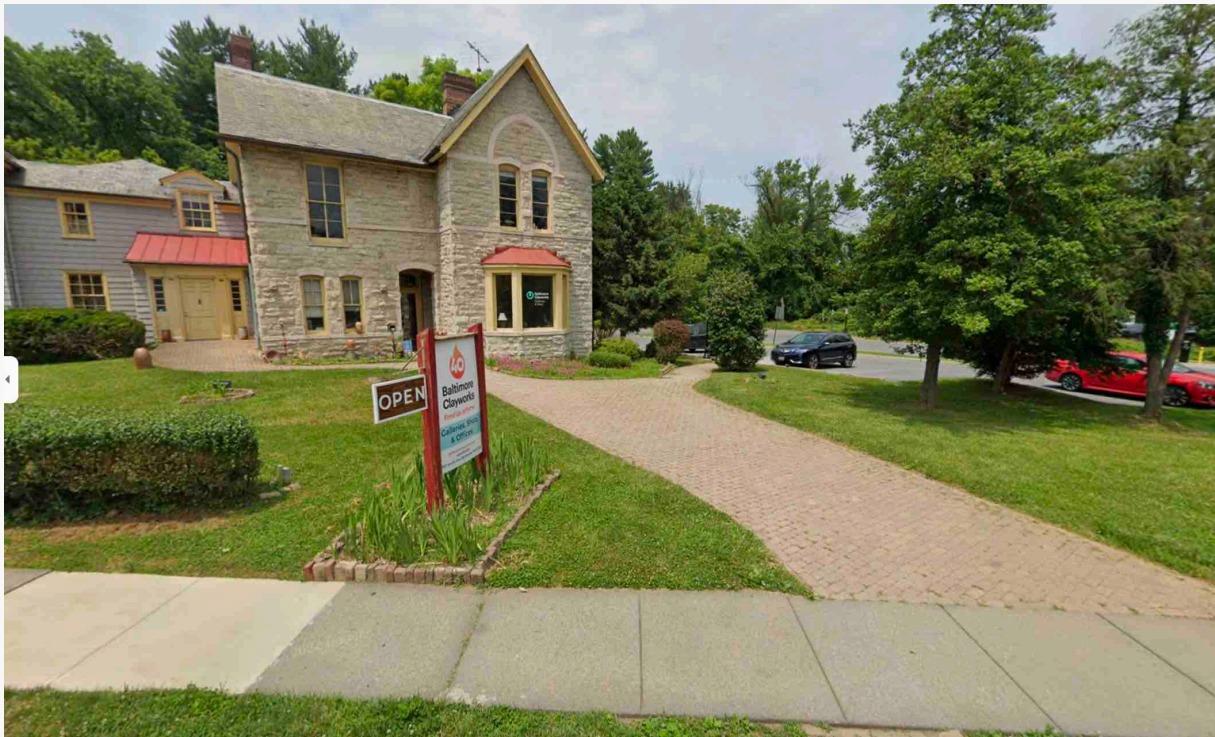
Budget and Stipend

Maximum budget: \$45,000, inclusive of fees, materials, and installation

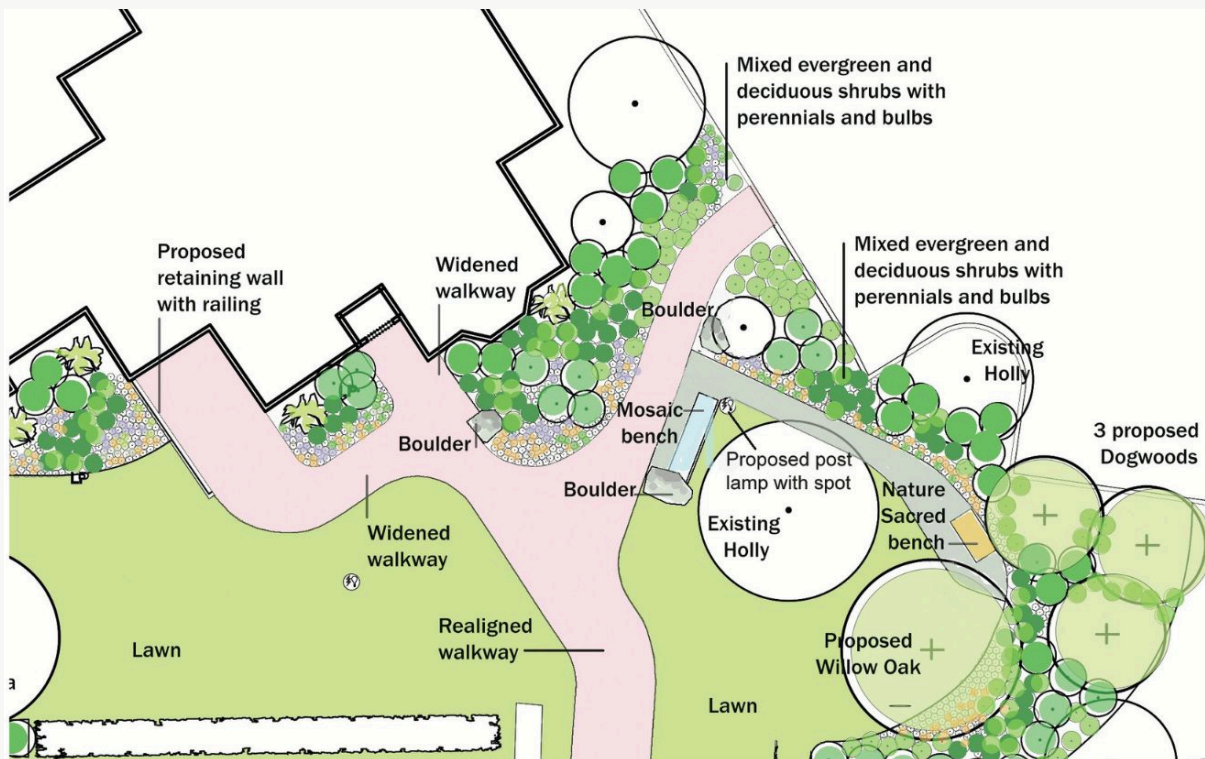
Artist Travel stipend: \$1,000

The budget covers artist fees and project management, including:

- One open community engagement session for design input
- Up to four community outreach sessions in collaboration with Clayworks teaching artists and community partners about the project and the process of mosaic
- Overhead expenses (sub-consultants, travel/lodging, etc.)
- Concept and design development, including budget and schedule
- Artwork materials (including base(s), concrete footing if applicable)
- Fabrication
- Artwork transportation to site and installation
- Any additional licenses, insurance, and any other costs as required to furnish and install the artwork resulting in a complete and fully functional installation



Site Location



Landscape Concept Design (subject to change)